



REF : THEATRE LOT 174

Beautiful 3 rooms apartment (lot 174)

Côté 15 - 19 bis rue Ginoux, Paris 15

Benefiting from the vitality of the Beaugrenelle district, boosted in particular by its shopping center, this ?COTE 15? building is located close to public transport (Charles Michel and Duplex) and the Jeannine Manuel bilingual and international school. The building benefits from the very commercial Rue du Théâtre, Rue de Lourmel and Rue du Commerce, with their numerous boutiques. This well-constructed ?Côté 15? building, with guarded and secure access, is resolutely ?GREEN? and modern. The apartment, located on the 3rd floor of the Fauré building, has been renovated to a very high standard, with respect for the environment.

This elegant 3-room apartment comprises an entrance hall, a fitted and equipped kitchen opening onto a spacious living/dining room, two bedrooms, [...]

Regulated by a co-owner status : yes

Condominium lot : 250

0 €

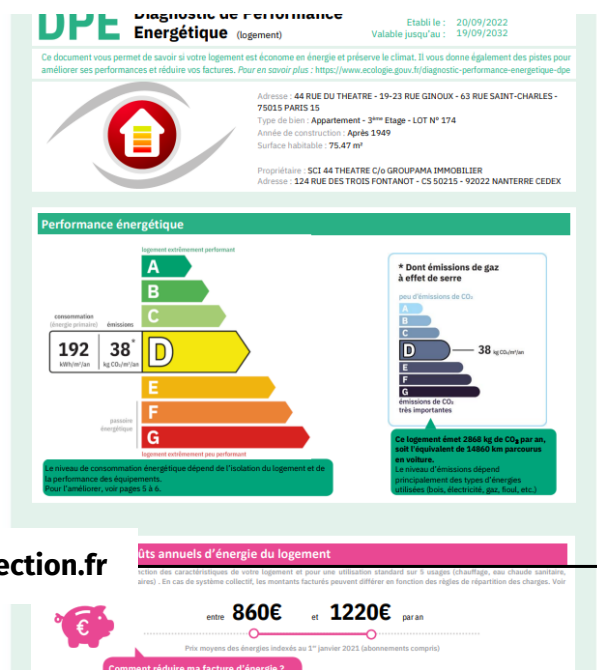
3 Bedrooms | 75.47 sqm | 3rdfloor

Subway :

Monthly fees : 0 €

Property tax : 0 €

Sophie DUPUIS 06 45 29 94 30



www.residential-collection.fr

